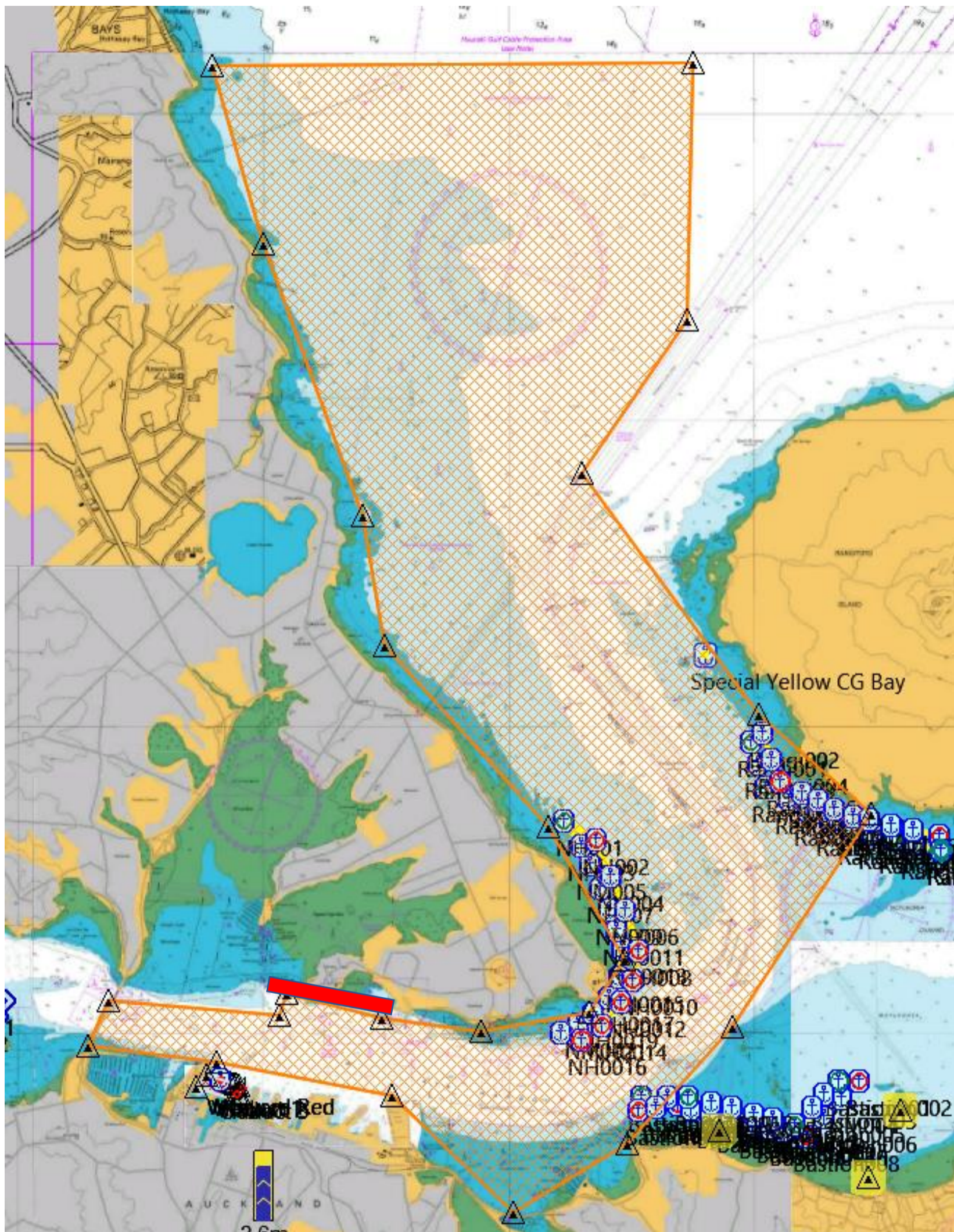


Course Area A - 5 Knot Restriction

NOT For Navigation



All vessels are reminded that Course Area A is mostly within the Cable NO ANCHORING or FISHING Zone.

Vessel operators must refer to approved navigation charts and systems to identify their proximity to this Zone

- On a day Course Area, A is being used for event racing, a 5 Knot Restriction applies to the "Orange" hashed area as indicated in the above chart extract.
- All vessels in the inner harbour should keep to the north of the area indicated by the **RED** shape to enable ferries to navigate safely in this location when event speed restrictions apply
- The use of transit lanes is not necessary as free navigation, at 5 Knots is possible outside these lanes
- Vessels are reminded of the risks to craft by generated wake.
- Speed restrictions will generally apply from 1pm (13:00 hours) until 7pm (19:00) hours each race day unless lifted earlier
- Lifting of event speed restrictions will be announced on Marine VHF channels 12 and 16