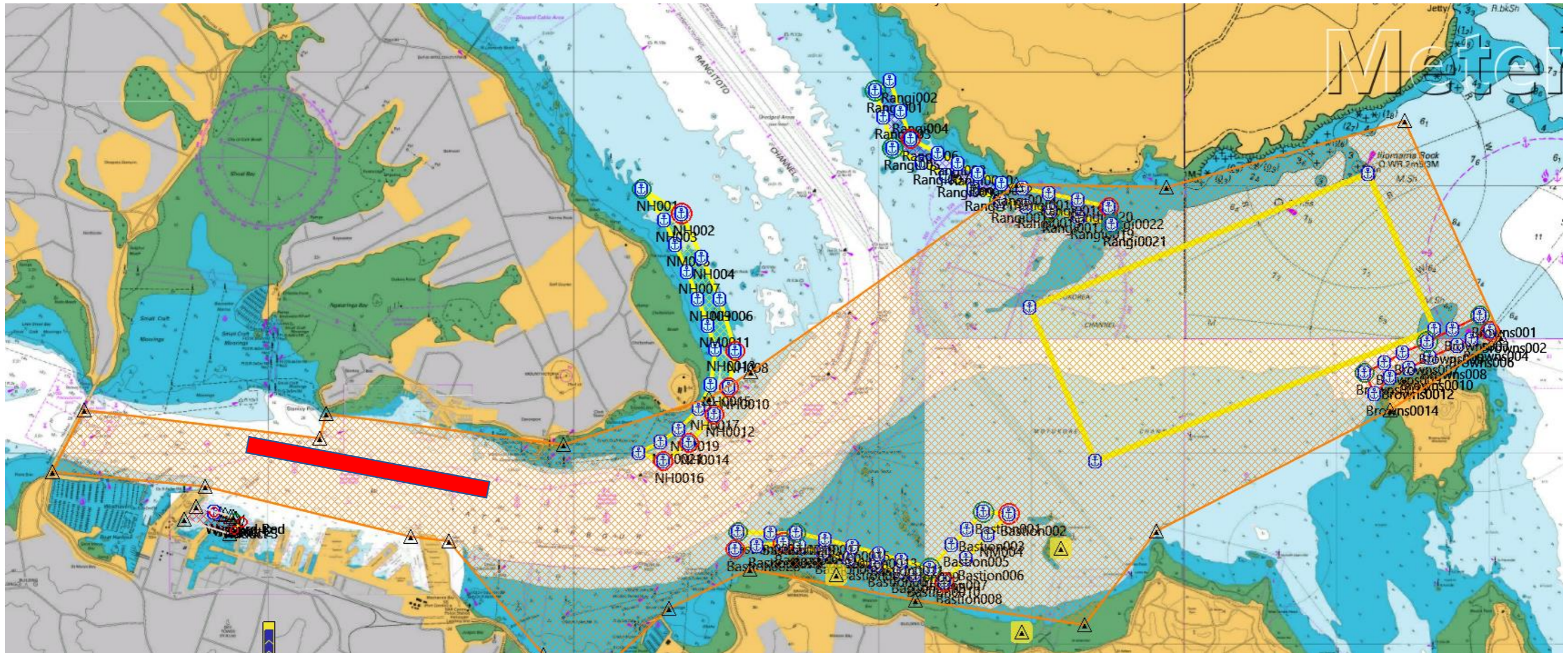


## Course Area D - 5 Knot Restriction

NOT for Navigation



- On a day **Course Area D** is used for event racing, a 5 Knot Restriction will apply to the “Orange” hashed area as indicated in this chart extract.
- Users of buoyed transit lanes during event speed restriction times off Browns Island and South of the Bastion reefs, are reminded that they are not permitted to stop and or reverse course in the lane and must keep to starboard.
- All vessels in the inner harbour should keep to the north of the area indicated by the **RED** shape to enable ferries to navigate safely in this location when event speed restrictions apply
- Sailing Vessels are not permitted to operate with sails hoisted, **in transit lanes** where event speed restrictions are in force
- Vessels are reminded of the risks to craft by generated wake.
- Speed restrictions will generally apply from 1pm (13:00 hours) until 7pm (19:00) hours each race day unless lifted earlier
- Lifting of event speed restrictions will be announced on Marine VHF channels 12 and 16