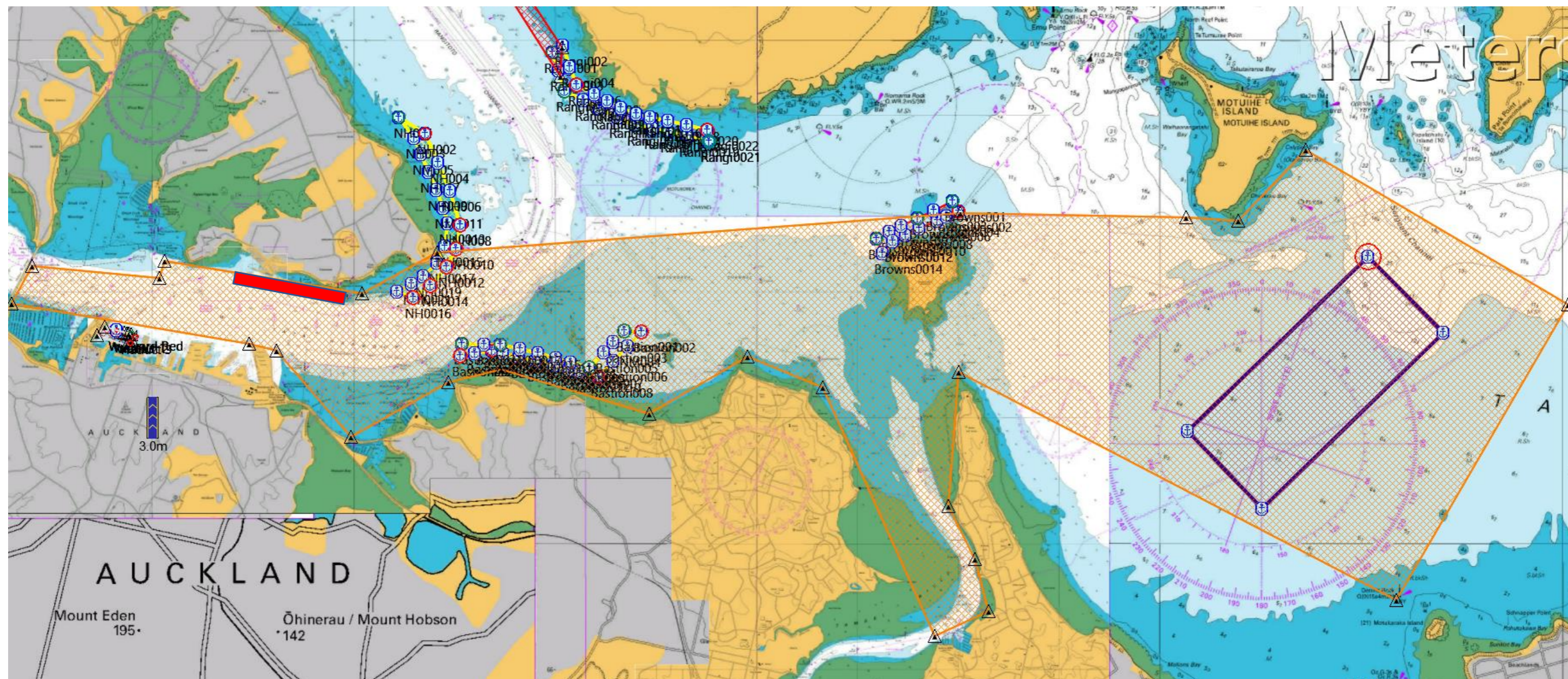


## Course Area E - 5 Knot Restriction

NOT For Navigation



- **Narrow but marked channels exist between the CBD and the event race area and vessels should refer to their own charts for information as to suitability for safe passage.**
- On a day **Course Area E** is being used for event racing, a 5 Knot Restriction will apply to the “Orange” hashed area as indicated in this chart extract.
- All vessels in the inner harbour should keep to the north of the area indicated by the **RED** shape to enable ferries to navigate safely in this location when event speed restrictions apply
- The use of buoyed transit lanes is not necessary as free navigation is generally possible outside the event race area.
- Vessels are reminded of the risks to craft by generated wake.
- Speed restrictions will generally apply from 1pm (13:00 hours) until 7pm (19:00) hours each race day unless lifted earlier
- Lifting of event speed restrictions will be announced on Marine VHF channels 12 and 16