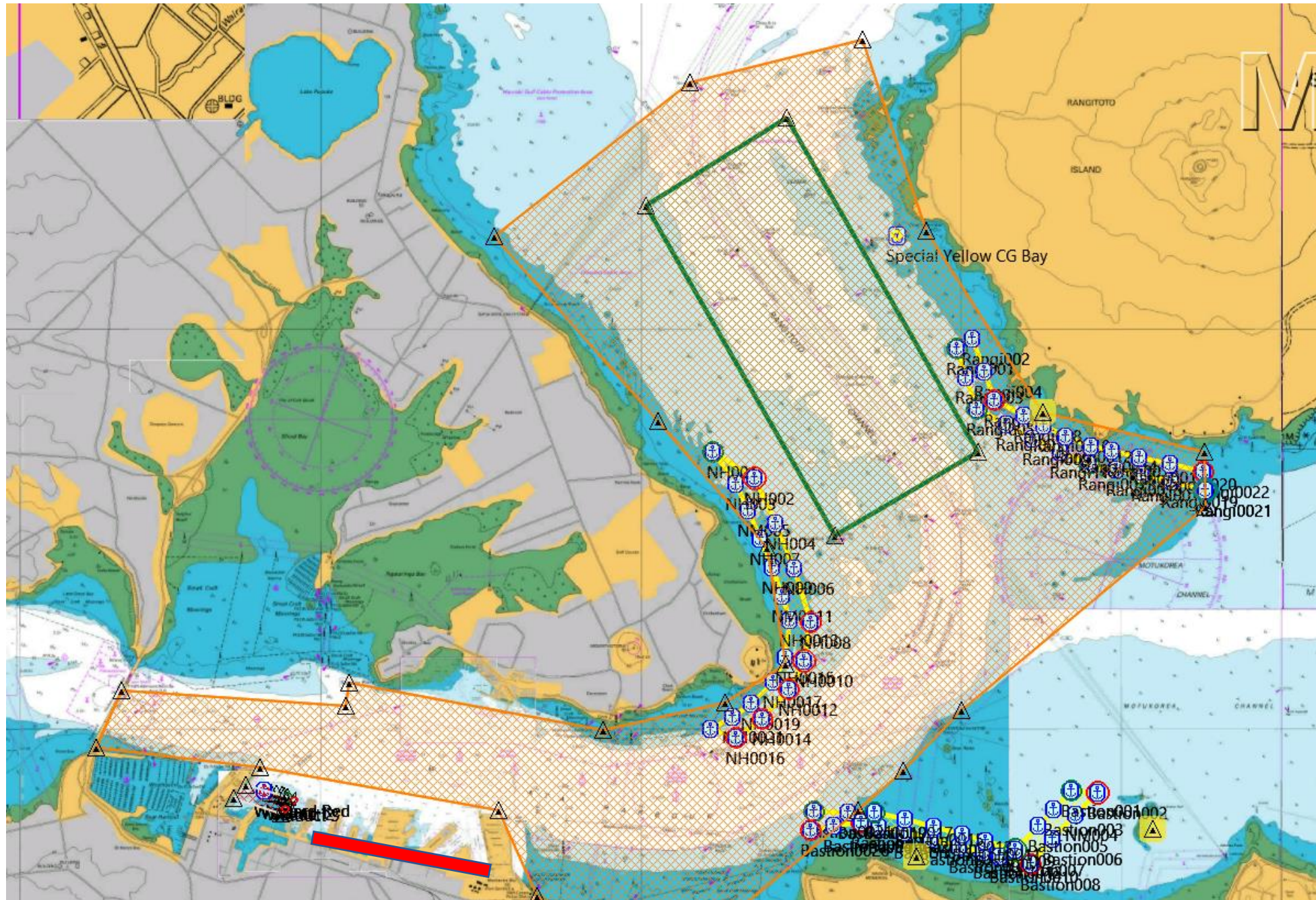


## Course Area B - 5 Knot Restriction

NOT For Navigation



- On a day Course Area B is being used for event racing, a 5 Knot Restriction will apply to the “Orange” hashed area as indicated in this chart extract.
- In the inner harbour vessels should keep to the north of the area indicated by the **RED** shape to enable ferries to navigate safely in this location when event speed restrictions apply
- Vessels are reminded of the risks to craft by generated wake.
- Users of buoyed transit lanes off North head, South of Bastion reefs and off Rangitoto Island are reminded they are not permitted to stop or reverse course in the lane and must keep to starboard at all times.
- Sailing Vessels are not permitted to operate with sails hoisted, **in transit lanes** where event speed restrictions are in force
- Speed restrictions will generally apply from 1pm (13:00 hours) until 7pm (19:00) hours each race day unless lifted earlier
- Lifting of event speed restrictions will be announced on Marine VHF channels 12 and 16